



Color-Shell

UV Stable Solvent Acrylic Stain



PRODUCT DESCRIPTION

Seal-krete Color-Shell utilizes the latest in UV stable colorant technology offering a fast drying easy to apply concrete stain. Color-Shell creates unique, multi-colored translucent colors that will not peel, chip, or flake. Available in 20 standard colors which can be combined to create unlimited color possibilities. When properly sealed Color-Shell will resist staining and harsh chemicals.

FEATURES AND BENEFITS:

- Beautiful Variegated Finish
- VOC < 100, SCAQMD Approved Stain, Low Odor
- Fast Drying - Topcoat in 1 hour
- Easy Application
- Acid Free
- Will Not Peel or Flake
- Gloss and Matte Topcoats Available
- Available in:
 - 16 oz bottles
 - 20 Standard Colors



RECOMMENDED USES:

- Restaurant Floors
- Entry Ways
- Bar Floors
- Patios & Walkways
- Basement Floors
- Garage Floors
- Refresh Concrete Pavers
- Stamped Concrete

Important: Read all directions thoroughly. Recommended: Wear gloves, safety glasses and protective clothing or apron.

SURFACE PREP*

New concrete should be allowed to cure for a minimum of 28 days. The concrete must be at least 2500 psi, structurally sound, dry, and free of grease, oils, coatings, dust, curing compounds and other coatings or contaminants. Surface laitance must be removed. Rising moisture vapor emission rate must not exceed 1.35 kg per 92.90 m² (3 lbs per 1000 sqft) over a 24 hour period as measured by calcium chloride test method ASTM F-1869. The application area must be completely free of sealers, oils, dirt, paint, alkali, penetrating sealers, or any foreign materials that would prevent Color-Shell Stain from penetrating the concrete surface. The recommended substrate should have a minimum concrete surface profile (CSP) of 1(one) in accordance to the ICRI Guideline No. 03732. Contact ICRI at www.ICRI.org for more information on these surface profiles. Remove any liquid release prior to application of the Color-Shell Stain. Protect adjacent areas from over-spray, runoff, spills, and tracking, prior to application.

MIXING INSTRUCTIONS

Color-Shell Stain is packaged in liquid form and needs to be mixed with acetone. Please follow the Acetone manufacturer's instructions and Safety Data Sheet (SDS) for safe handling and exposure limits.

Semi-transparent finish - Mix one bottle of Color-Shell to one gallon of acetone and mix 30 seconds.

Deep rich finish - Mix one bottle of Color-Shell to one quart of acetone and mix 30 seconds.

Transparent finish - Mix one bottle of Color-Shell to five gallons of acetone and mix 90 seconds.

DO NOT USE any type of electrical equipment to stir the product into the Acetone. Acetone is highly flammable and may ignite.

APPLICATION

Color-Shell is ready for application as soon as it's mixed with acetone. Use only an acetone resistant sprayer equipped with EPDM Seals like Chapin model #21127XP. Begin by spraying evenly and continuously over the prepared surface, using a conical tip, in a circular motion. Do not allow Color-Shell to puddle. Mop up any excess with a clean rag so that the surface will dry evenly. During application keep end of tip at least 12-24 inches from substrate. This technique will insure that Color-shell is fogged on resulting in a variegated look. Co2 based sprayers are recommended for large areas. These sprayers will offer constant even pressure. Avoid long straight runs to minimize striping. A second color can be applied right after or at the same time to create a multi-color or two tones finish.

Important: if you need to stop during application, we recommend covering spray tip with a clean rag and or putting sprayer into a 5 gallon pail to avoid getting drips on the deck. Allow to dry 1 hour before sealing.

SEALING

Allow Color-Shell to thoroughly dry (approximately 1 hour) before applying sealer. Consult desired sealer's product data sheet for proper application procedures.

Approved Top Coats:

Paver-Shell - Solvent based acrylic sealer (Use Viton equipped sprayer)

Clear-Shell - 1K UV Stable Urethane

Dura-Shell WB - 2K Waterbased Polyurethane

CLEAN-UP, STORAGE AND DISPOSAL

CLEAN-UP: Clean tools and sprayer immediately with acetone. Dried Color-Shell with require mechanical abrasion from the substrate to be removed. Do not use xylene in an acetone sprayer as its will dissolve the gaskets damage hose and tips.

HANDLING: Do not breathe mixed material. Use adequate ventilation

KEEP FROM FREEZING: Store in well-ventilated area above freezing.

DISPOSAL: Collect with absorbent material. Dispose of in accordance with current local state and federal regulations.

CAUTION: KEEP OUT OF REACH OF CHILDREN. Avoid contact with skin. If splashed in the eyes remove contact lenses if worn. Flush eyes with clean water. If irritation occurs get medical attention. If swallowed, DO NOT induce vomiting. Take immediately to hospital or physician.

For more information refer to Safety Data Sheet.

* Sanding or removing paint containing lead may be hazardous. For information contact the National Lead Information Center at 1-800-424-LEAD or www.epa.gov/lead.





HIGH PERFORMANCE
FLOOR COATING SYSTEMS

Color-Shell

UV Stable Solvent Acrylic Stain

LIMITATIONS

DO NOT USE any type of electrical equipment to stir the product into the Acetone. Acetone is highly flammable and may ignite. Apply when temperature is 40°F to 85°F (5 to 29.5°C). Do not apply if water or ice is present. Cure new concrete 28 days before application. Do not apply to slabs on grade unless a heavy uninterrupted vapor barrier has been installed under the slab. Do not apply if the floor Moisture Vapor Rating is higher than 1.35 kg per 92.90 m² (3 lbs per 1000 sqft)

IMPORTANT: Do a small test in an inconspicuous area before starting project to assure compatibility of all products and approval of color. Read all instructions and warnings on all product labels and technical data sheets before using Seal-Krete products.

MATERIAL PROPERTIES AT 75°F

| | |
|--------------------------------|----------------------|
| Color | 20 standard colors |
| Dilution | Acetone |
| Coverage | 300-600 sq./ft. gal* |
| UnMixed VOC Content | < 100 g/L** |
| Mixed with Acetone VOC Content | < 50 g/L** |
| Dry To Touch | 5 minutes |
| Recoat Time | 15 mins |

*Coverage will vary depending on porosity of the surface being stained

**EPA Method 24 – Stain Category

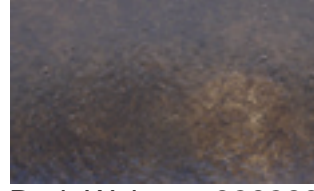
COLOR CHART



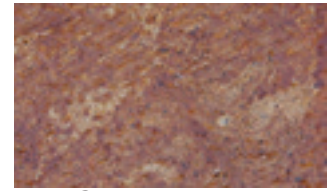
Saddle Brown - 980801



Brown - 980802



Dark Walnut - 980803



Cola- 980804



Leather - 980805



Desert Tan - 980806



Vintage Umber - 980807



Purple - 980808



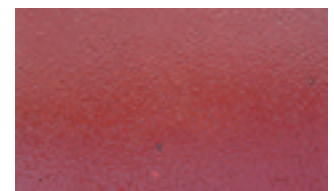
Dark Blue - 980809



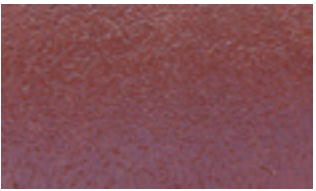
Blue - 980810



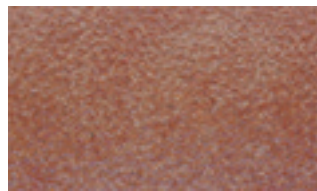
Turquoise - 980811



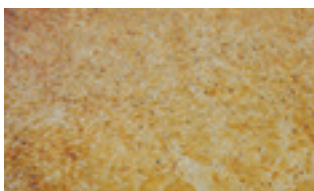
Red - 980812



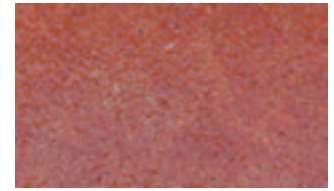
English Red - 980813



Terra Cotta- 980814



Malay Tan - 980815



Burnt Orange - 980816



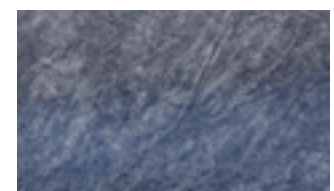
Fern Green - 980817



Light Green - 980818



Gray - 980819



Black - 980820

WARRANTY: Seller makes no warranty, either expressed or implied, concerning this product, its quality, performance, merchantability, or fitness for a particular purpose other than expressly designated warranty of this label. Buyer assumes all risk of use and handling of this material.

TECHNICAL SUPPORT: For more information on surface prep or application guidelines, or to obtain a Safety Data Sheet, call 1-800-323-7357, M-F (8:00 am-5:00 pm EST) or visit our website at www.seal-kretehp.com.

Country of Origin: U.S.A.



Convenience Products

306 Gandy Rd., Auburndale, FL 33823 USA

Questions or comments? e-mail: tech@seal-krete.com or call 1-800-323-7357

HOW TO TREAT CONCRETE®

hp.seal-krete.com